



*Café • Child Contact • Support Services • Early Years*



# Room Hire

## Birthday parties

We have a large, light & versatile play space with a selection of child-sized furniture, toys and equipment, perfect for children's parties. Buffet-style catering or individual lunch/ party food boxes can be provided and special dietary requirements catered for.



Accommodates up to 30 people

## Health / meeting room

On the ground floor of the Oak building. This room is ideal for health professionals, clinical supervisions and appointments or as an interview room.



Accommodates up to 6 people

## Room Hire Prices

For details please call us on  
01885 488495 or email  
[info@hopefamilycentre.org](mailto:info@hopefamilycentre.org)



If you would like to visit or find out more call - **01885 488495**  
or email us on - **[info@hopefamilycentre.org](mailto:info@hopefamilycentre.org)**  
**HOPE Centre, Hereford Road, Bromyard HR7 4QU**

**A wide variety of rooms**  
**Excellent facilities and resources**  
**On site catering**  
**Accessible, on site lift**  
**Hourly or day rates available**

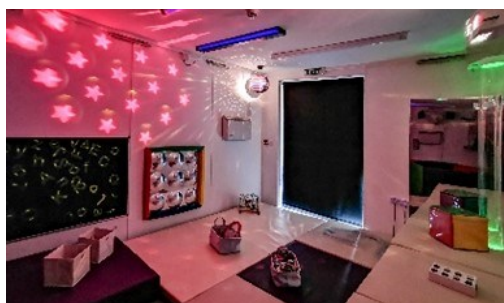
By choosing us as your venue you are supporting a local charity and the services and support it offers.

### Café

The Hope café is open every weekday for the general public and to everyone who uses our facilities. We serve freshly prepared food that is made on the premises and can also serve food and/or light refreshments for meetings and buffet lunches, refreshments to those using our meeting rooms.



### Sensory Room

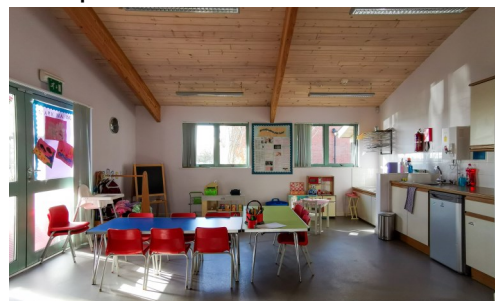


**Accommodates up to 8 people**

This room is a fantastic resource and gives an exceptional sensory experience, including lights and textures to stimulate children, and lots of lovely resources. You can hire the space in 45 minutes slots and it easily fits up to 8 people. The space can be used privately by families and children or by professionals looking to support children's development in a safe and welcoming environment.

### Family Room

On the ground floor of the Oak Building, this large room has direct access to the garden and an outdoor play area. It is often used for the delivery of child and young people focused activities and groups. E.g. child contact sessions, social care meetings and parent and child activities.



**Accommodates up to 20 people**

### Large Meeting Room

Situated on the first floor of the Cedar Building, this space is often used for meetings, training and presentations by organisations delivering in house training and meetings. It has a wall mounted large tv/digital screen.



**Accommodates up to 25 people**

### Community Room

This ground floor meeting room is equipped with IT resources for presentations and training, including overhead projector, interactive whiteboard, flipchart and laptops for use when using the room.



**Accommodates up to 10 people**

### Interview/meeting room

Situated on the first floor of the Cedar Building, this is a more intimate meeting place suited for meetings of small groups and is often use for interviews and 1:1 supervisions.



**Accommodates up to 4 people**